

IP•Express•MLE

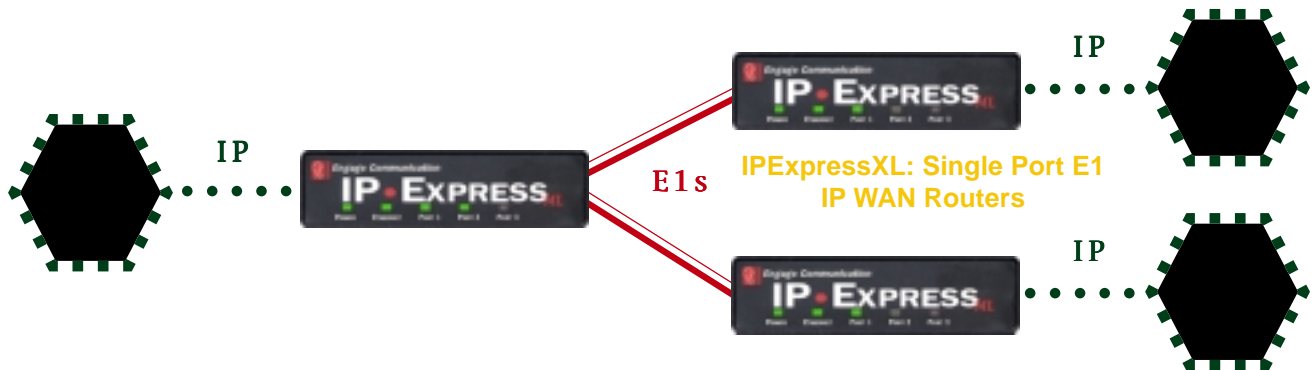
Engage Communication

• IP WAN Router with 2 Integrated E1 CSUs •

IP•Express•MLE is a Wide Area Network router that routes the Internet Protocol through 2 independent or inverse multiplexed E1 WAN ports. The E1 WAN ports support **Point to Point** and **Frame Relay** Wide Area Networking Protocols with 24/7 proven interoperability.

The **IP•Express•MLE** is a very reliable, high performance and cost effective IP WAN Router for interconnecting two remote LANs and for shared high performance Internet Access. The Integration of the E1 CSUs provides for a complete solution with a straight forward configuration. It is great for:

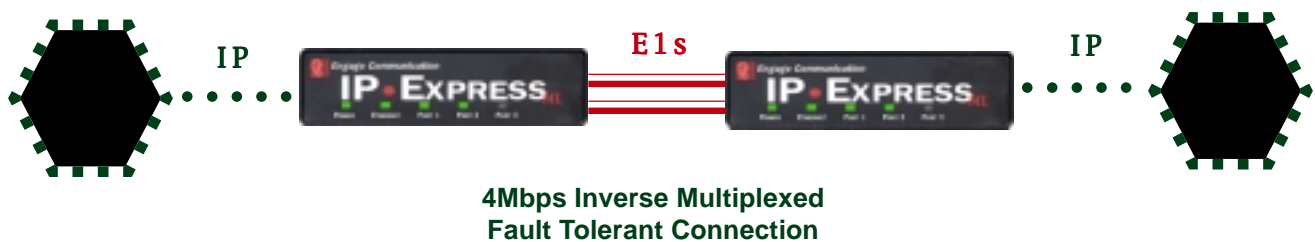
- Shared Internet Access
- Education District Networking
- Branch Office Connections
- Multimegabyte File Transfers



Network Security is provided with Full On Source, Destination Address; Port and Flag IP Packet filtering. Remote location interconnectivity is able to be selectively controlled at the network, device and application layers.

Inverse Multiplexing is an optional feature of the **IP•Express•MLE**. The Inverse Multiplexor delivers 4 Megabits of interconnectivity over Dedicated and Frame Relay WANs. Built in E1 line fault detection provides for automatic bandwidth backup. The Inverse Multiplexor is ideal for:

- Very Large Multimegabyte File Transfers
- Mission Critical Fault Tolerant Interconnects
- IP Video Streams





Technical Specifications

LAN Network Interface:

- One 10BaseT Ethernet

LAN Network Protocols Supported:

- TCP/IP (IP, TCP, UDP, RIP, ICMP, BOOTP, DHCP)
- AppleTalk (Configuration Only)

WAN Network Interfaces:

- Two E1/FracE1 CSU/DSU ports

WAN Network Protocols Supported:

- PPP (RFC 1548, RFC 1332, RFC 1334, PAP)
- Frame Relay (ANSI ANNEX D, LMI, RFC 1420)

E1/Fractional E1 Specifications:

- Framing - CRC4 or FAS
- Coding - HDB3 or AMI
- Supports DS0 assignments from 1 to 31

Dimensions:

- 9" (L) x 5.5" (W) x 1.50" (H)

Inverse Multiplexor Option

- WAN Packet Traffic Split in half over each T1 for a doubling of the data rate to 3 Mbps
- Fault Tolerant Auto Backup to working T1 Line

TFTP Online Upgrade Capable (FLASH ROMs)

- Router is fully operational during upgrade

Management:

- Telnet support with Edit and Paste Template Files
- EngageView management via AppleTalk
- Console Port for Out of Band Management
- SNMP support (MIB I, MIB II)
- Remote configuration, monitoring, & reset
- View routing, statistics, Frame Relay DLCIs, ...

Network Security:

- Administrator Password
- Full TCP/IP Filtering
 - Source and Destination Address; Port & Flags

Power:

- 24VAC, 1.0A; International Adapters Available

Back Panel

E1-1: E1 DSU/CSU Interface for WAN connectivity via PPP or Frame Relay

Console Port Connector
• RJ 45 to DB 9 Male Adapter provided



E1-2: E1 DSU/CSU Interface for WAN connectivity via PPP or Frame Relay

Standard 10BaseT Ethernet interface

DB25 connector is a Synchronous V.35/RS530/RS232 DCE Interface

Support

Engage Provides Free Technical Support. Online Support Available: support@engagecom.com. TFTP Software Upgrades, CLI Configuration Templates: [ftp.engagecom.com](ftp://engagecom.com).

IP•Express•MLEs are pre-configured to operate with the prevalent E1 telecommunication settings.